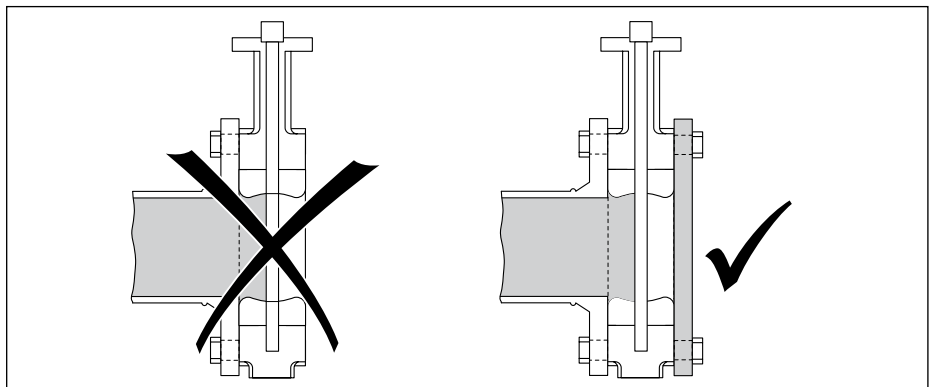
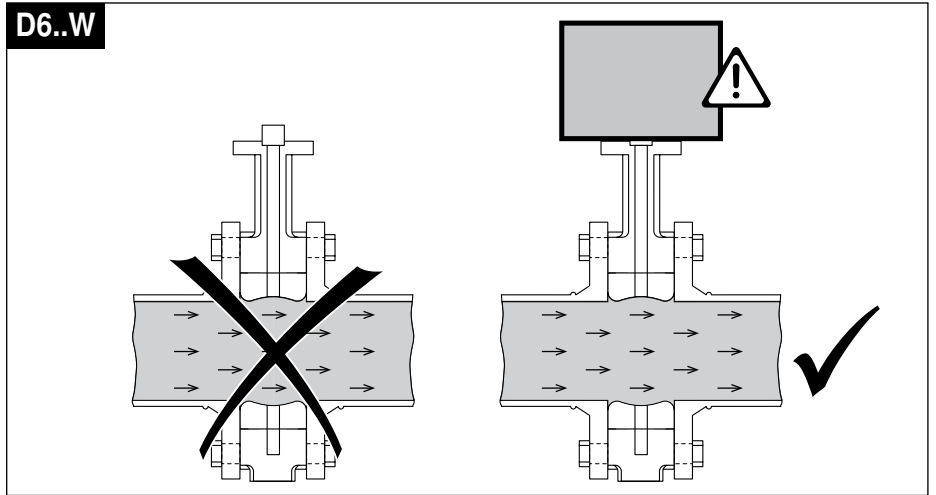
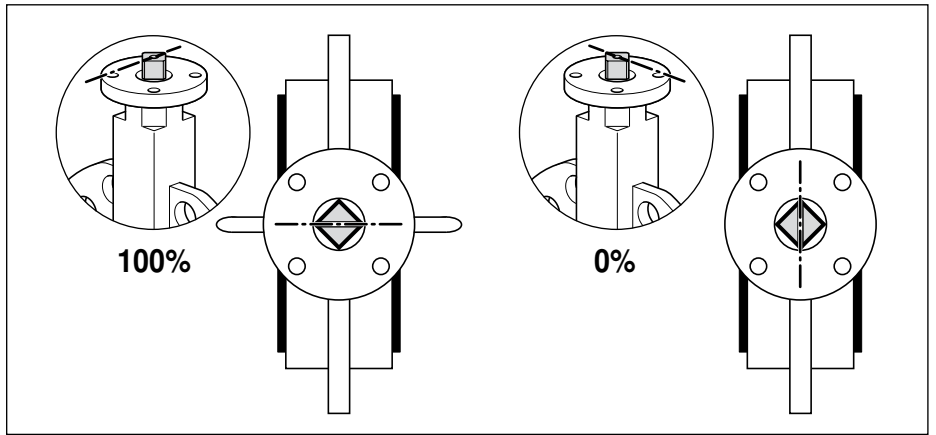
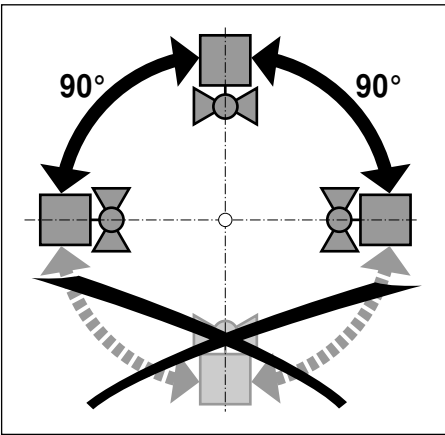
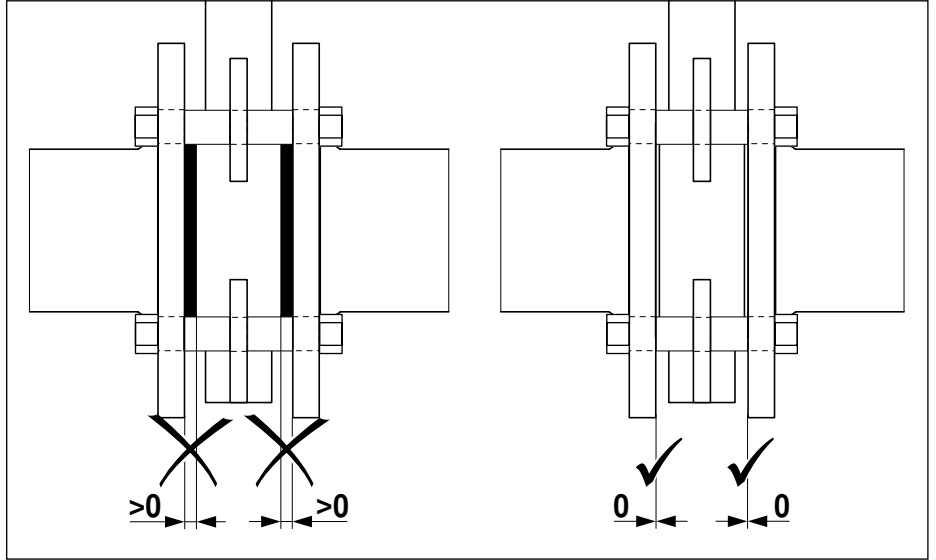
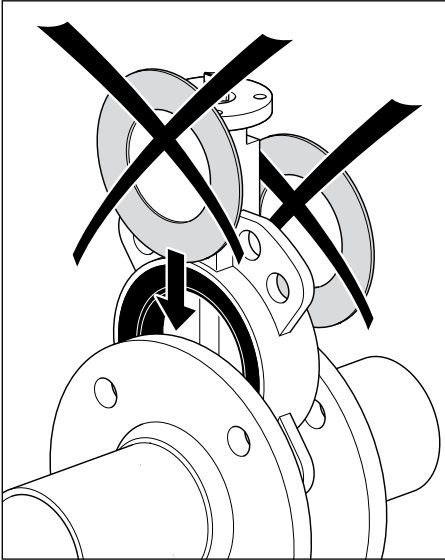


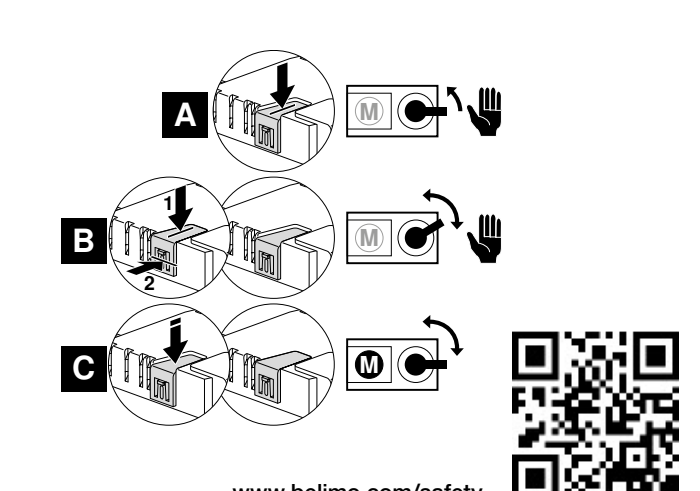
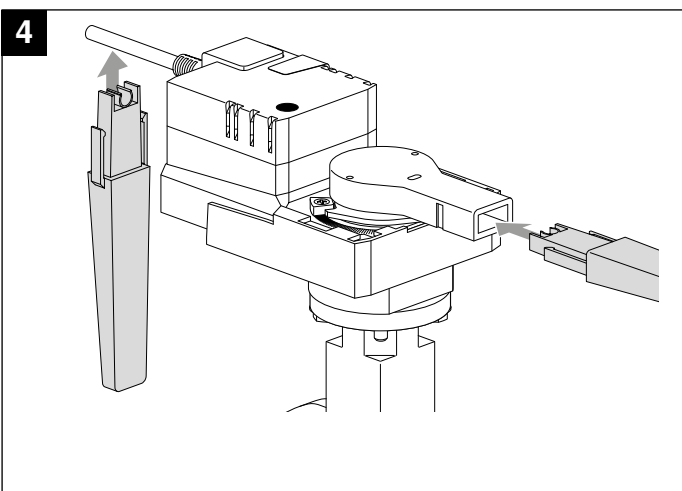
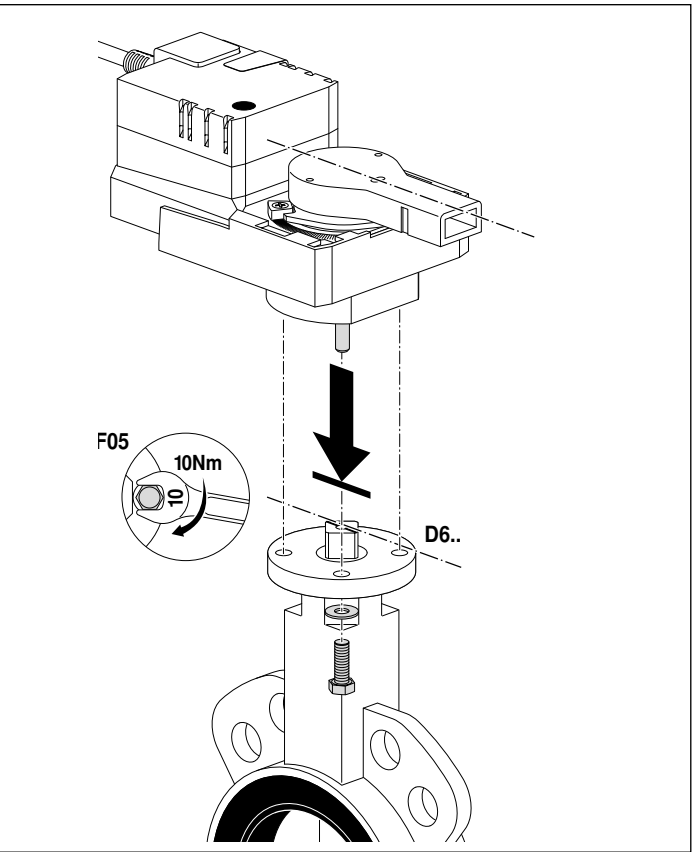
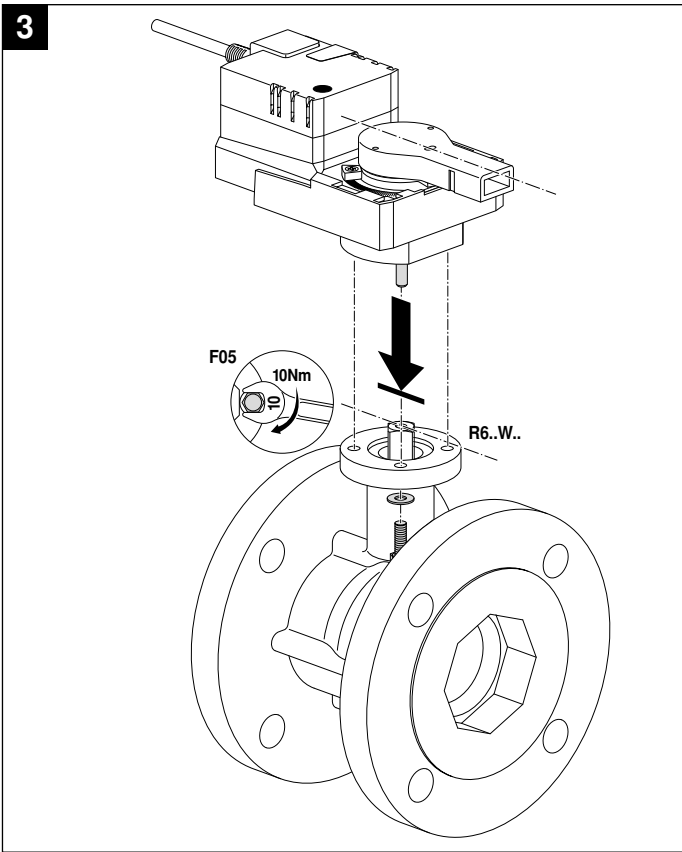
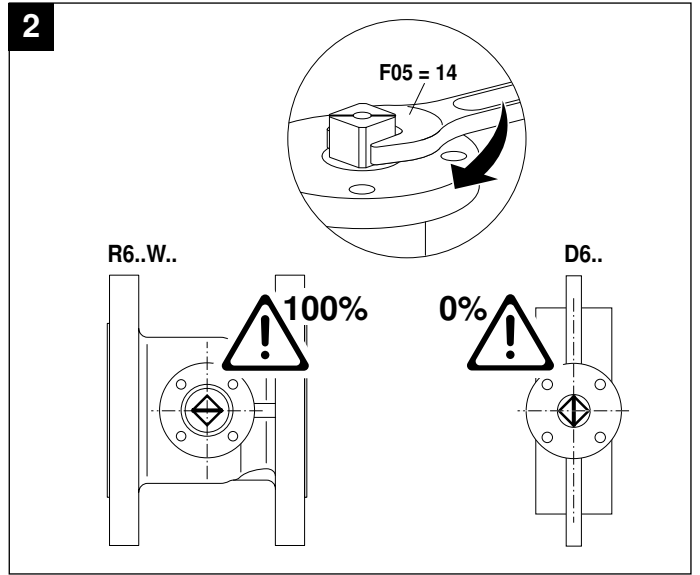
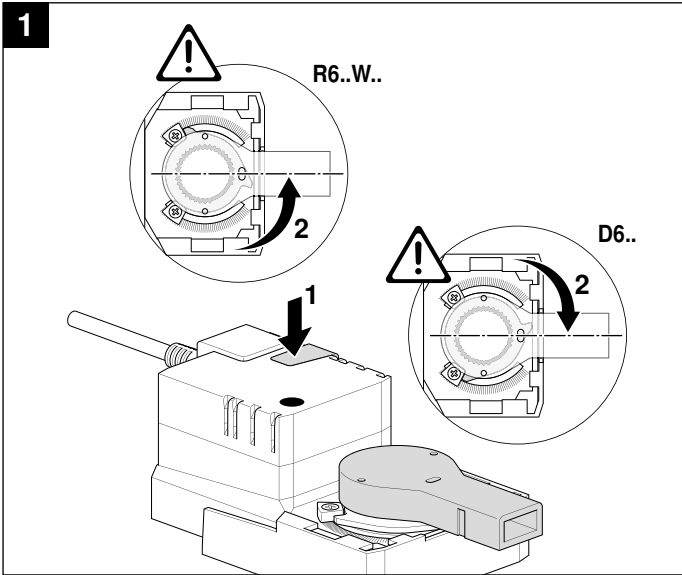
DN	A	B
DN 25	M12	≤35 Nm
DN 32	M16	≤94 Nm
DN 40	M16	≤94 Nm
DN 50	M16	≤94 Nm
DN 65	M16	≤94 Nm
DN 80	M16	≤94 Nm
DN 100	M16	≤94 Nm
DN 125	M16	≤94 Nm
DN 150	M20	≤162 Nm
DN 200	M20	≤162 Nm
DN 250	M24	≤270 Nm
DN 300	M24	≤270 Nm

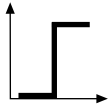
BELIMO Automation Ltd
Brunnenbachstrasse 1
8340 Hinwil
SWITZERLAND



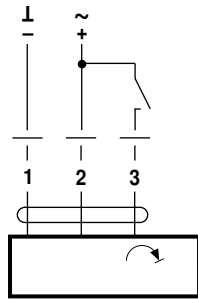
www.belimo.com/safety





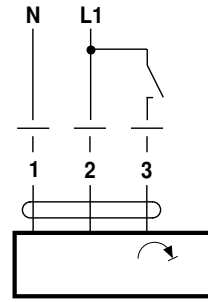


AC 24 V / DC 24 V

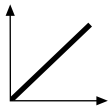


SR(C)24A-5

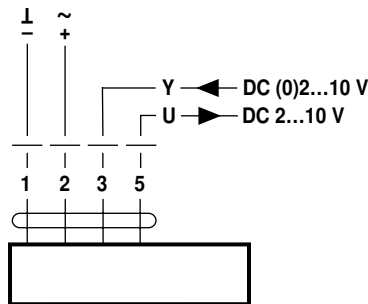
AC 230 V ⚠



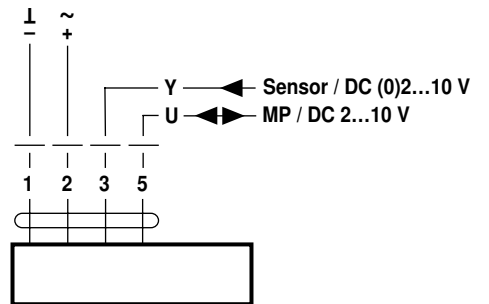
SR(C)230A-5



AC 24 V / DC 24 V

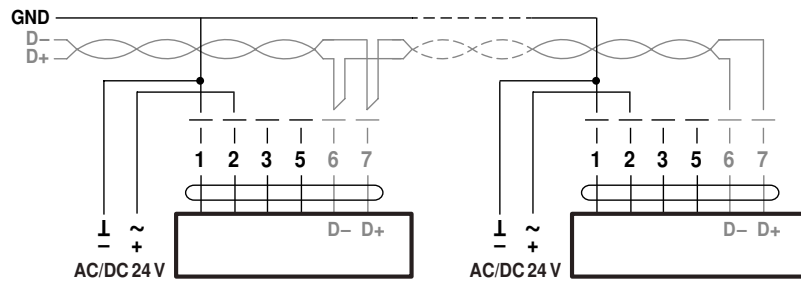


SR24A-SR-5 / SR24A-MF-5



SR24A-MP-5

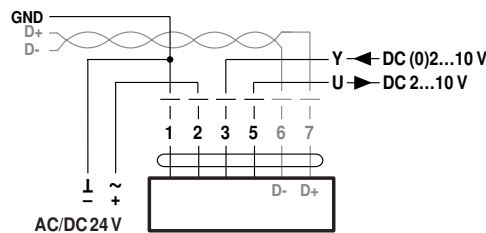
BACnet MS/TP / Modbus RTU



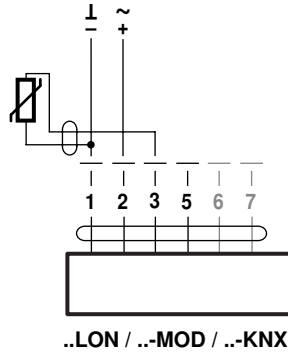
SR24A-MOD-5

SR24A-MOD-5

BACnet MS/TP / Modbus RTU / analog



SR24A-MOD-5



Ni1000	-28...+98°C	850...1600 Ω ²⁾
PT1000	-35...+155°C	850...1600 Ω ²⁾
NTC	-10...+160°C ¹⁾	200 Ω...60 kΩ ²⁾

